

Meandering Moments

A restored nature education and recreation corridor with unique nodes of activation

CULTURE

PRIORITIZING PARKS & NATURE EDUCATION

Moments where the Jordan River intersects with parks become key activity areas within a restored habitat.

NATURE

MAKING ROOM FOR THE RIVER

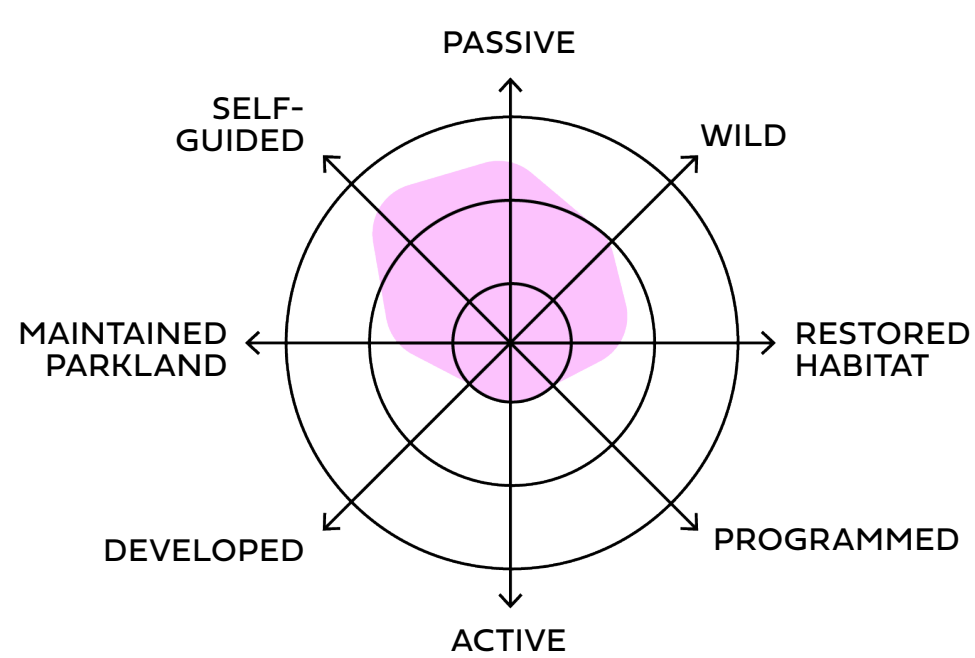
Setting back the river bank to allow as much space for habitat and water quality restoration as possible.

CARE

NATURE-DRIVEN MAINTENANCE

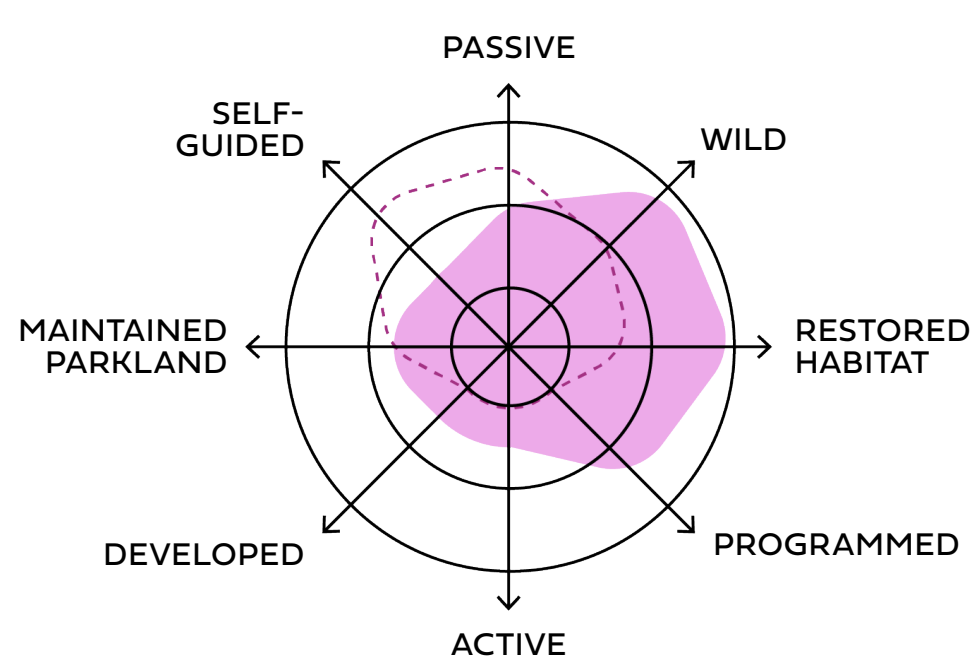
Maintenance districts organized by habitat type, partnerships to fill in gaps.

How does this idea compare to the corridor today?



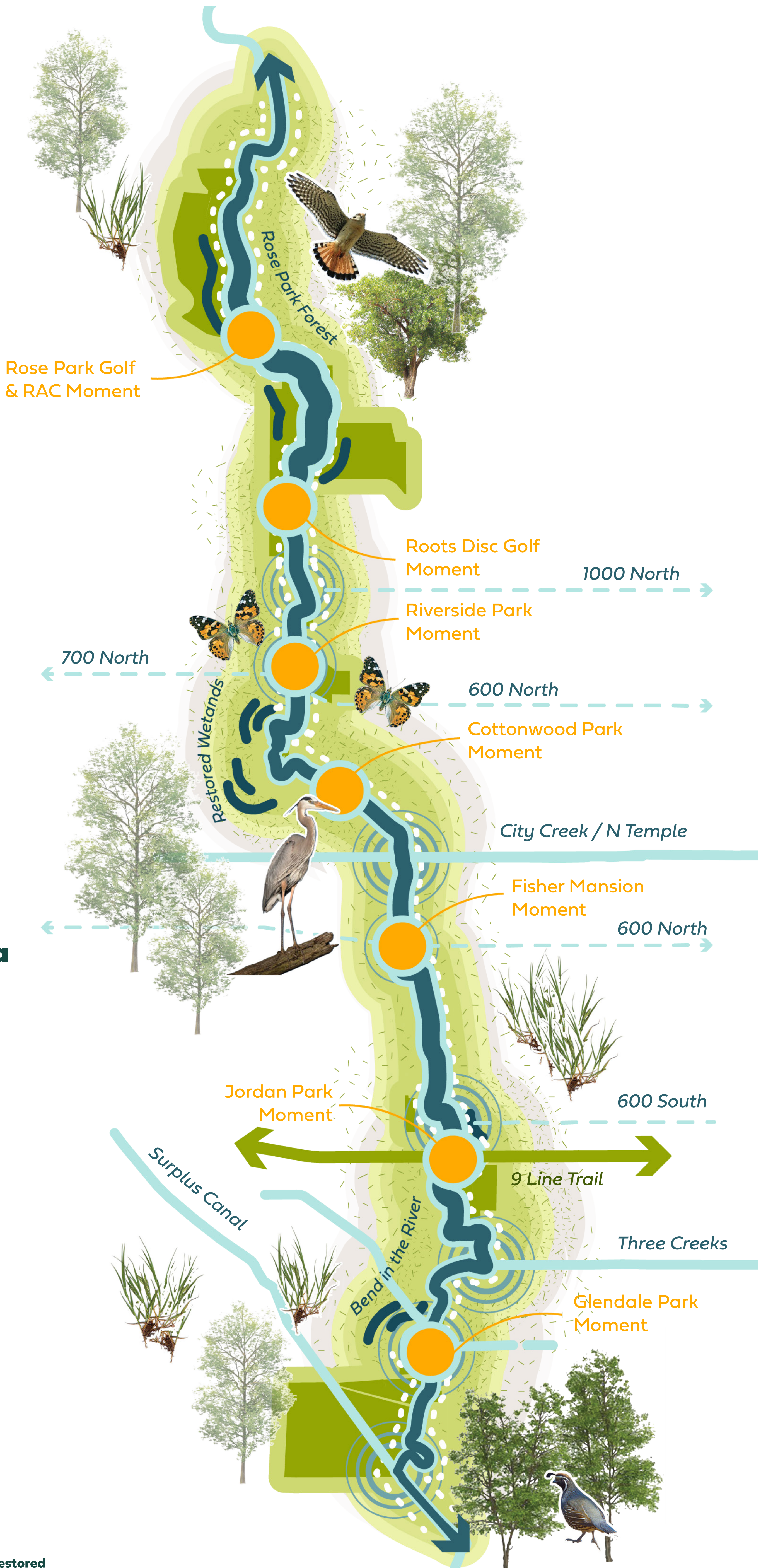
TODAY

The Jordan River Corridor is passive, self guided, and wild today, with minimal habitat and native ecology.



THIS CONCEPT

Meandering Moments proposes more restored habitat space with active programming in parks to minimize habitat disturbance while maximizing nature education.



What could Meandering Moments look like in...

PARKS & OPEN SPACES

Parks are the active nodes within Meandering Moments, creating space for education, play and community gathering within restored native habitat.

CELEBRATE

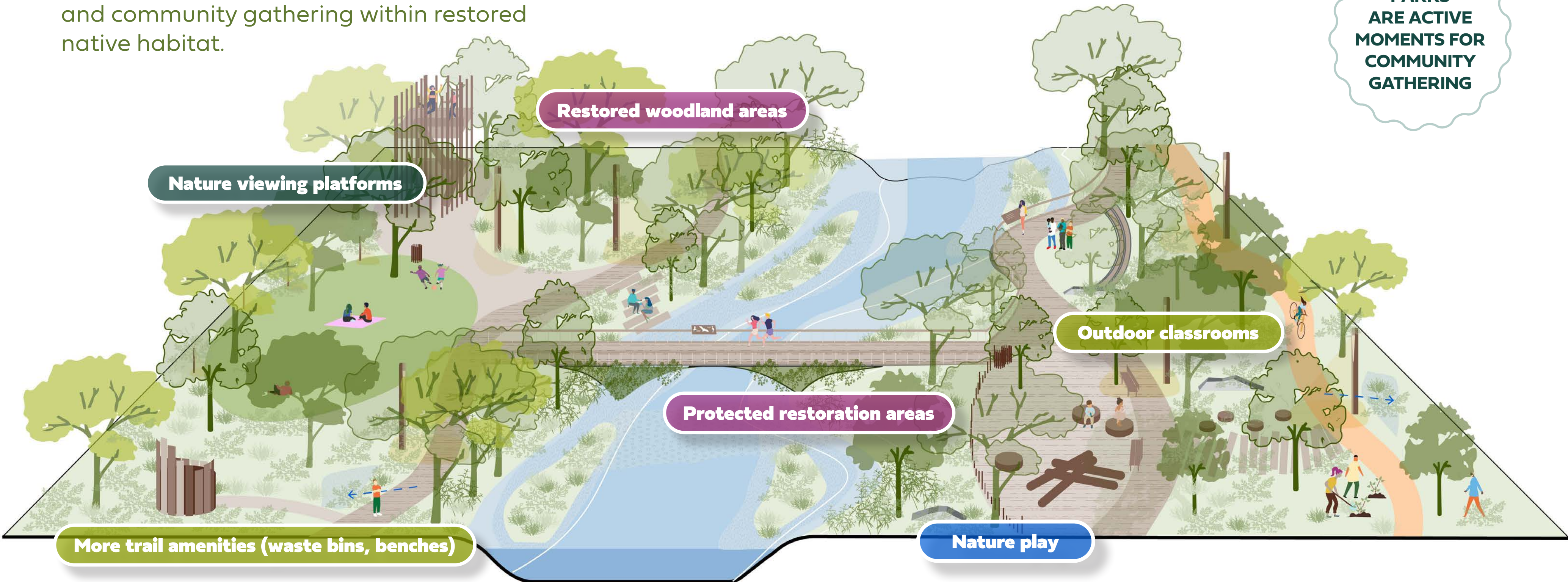
CONNECT

COLLECTIVE CARE

RESTORE & ENHANCE

SAFE & VIBRANT

PARKS ARE ACTIVE MOMENTS FOR COMMUNITY GATHERING



Nature viewing platforms

Restored woodland areas

Protected restoration areas

Outdoor classrooms

More trail amenities (waste bins, benches)

Nature play

What could Meandering Moments look like at...

TRAIL INTERSECTIONS

Meandering Moments works with adjacent land to improve water quality and create nature-themed gateways.

CELEBRATE

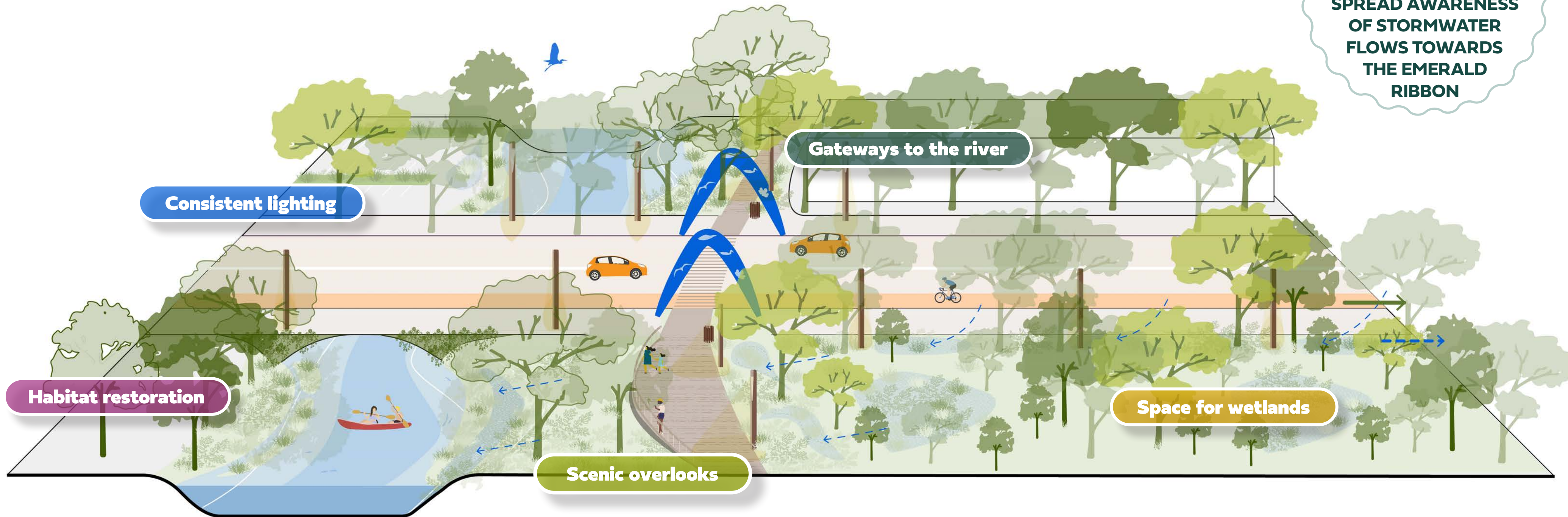
CONNECT

COLLECTIVE CARE

RESTORE & ENHANCE

SAFE & VIBRANT

EDUCATIONAL SIGNAGE THROUGHOUT SALT LAKE CITY WILL SPREAD AWARENESS OF STORMWATER FLOWS TOWARDS THE EMERALD RIBBON



Consistent lighting

Gateways to the river

Habitat restoration

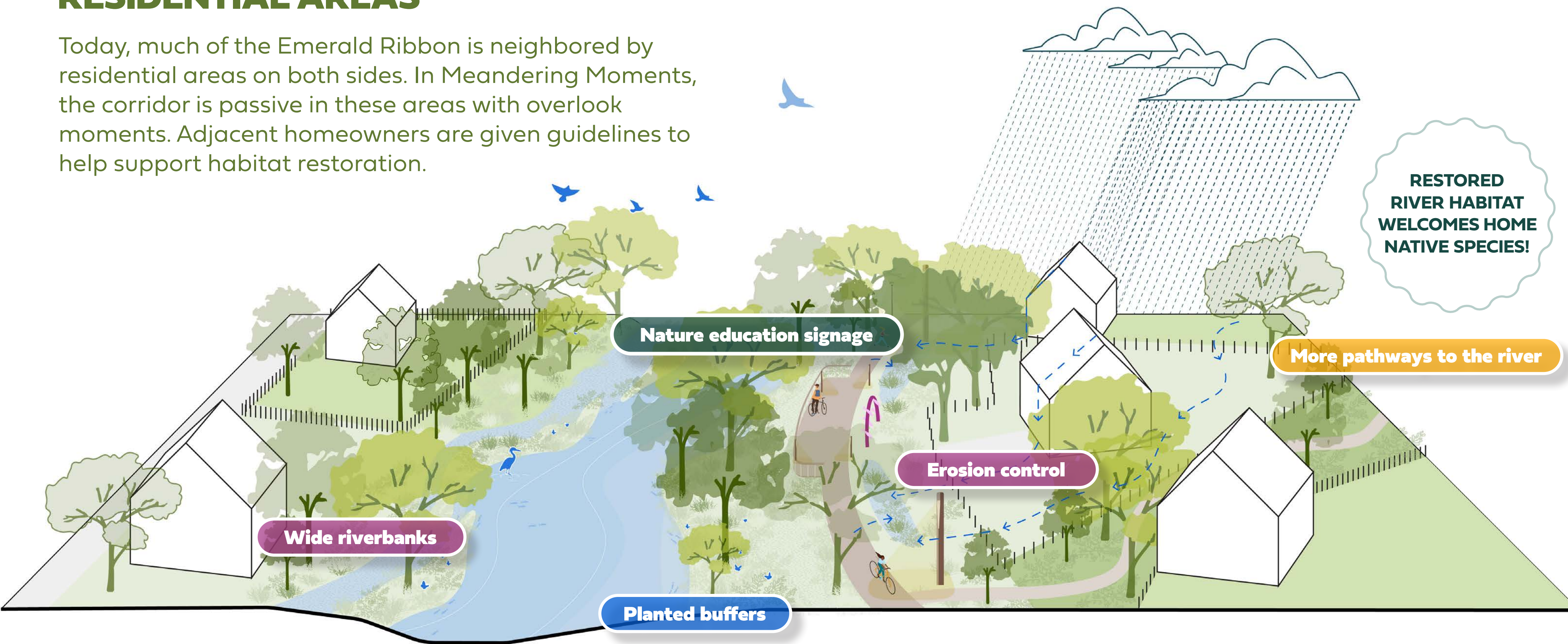
Scenic overlooks

Space for wetlands

What could Meandering Moments look like in...

RESIDENTIAL AREAS

Today, much of the Emerald Ribbon is neighbored by residential areas on both sides. In Meandering Moments, the corridor is passive in these areas with overlook moments. Adjacent homeowners are given guidelines to help support habitat restoration.



Wide riverbanks

Nature education signage

Erosion control

More pathways to the river

Planted buffers

RESTORED RIVER HABITAT WELCOMES HOME NATIVE SPECIES!

Dynamic Districts

A vibrant, ever-changing corridor that celebrates the diversity of West Side neighborhoods

CULTURE

AMPLIFYING COMMUNITY CHARACTER

A vibrant activated corridor with programs and amenities that highlight neighborhood character.

NATURE

HIGHLIGHTING BIODIVERSITY

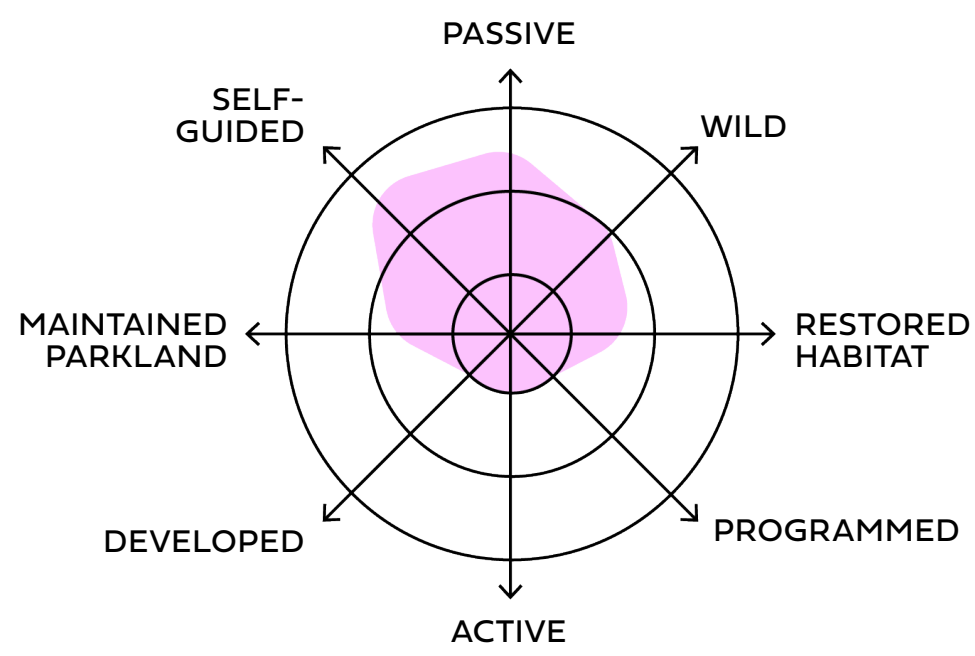
Reaches celebrate their unique native ecological palette, from Rose Park forests to Glendale meadows.

CARE

CREATING COMMUNITY OWNERSHIP

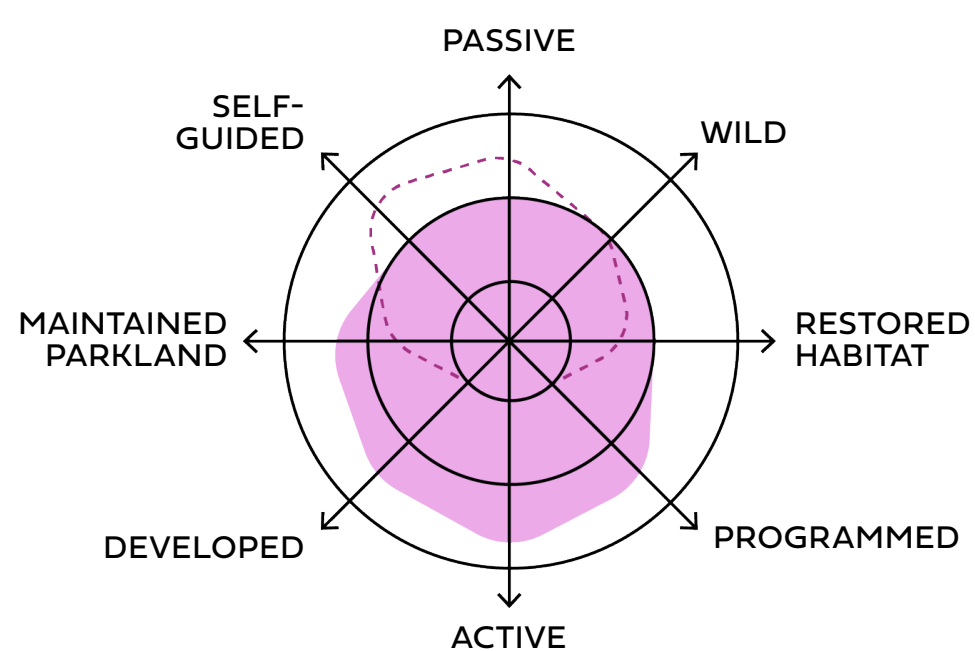
Community Development Organizations help with maintenance, programming and fundraising, organized by district.

How does this idea compare to the corridor today?



TODAY

The Jordan River Corridor is passive, self guided, and wild today, with minimal habitat and native ecology.



THIS CONCEPT

Dynamic Districts would enliven the corridor with more space for events and programming while also restoring the river habitat.



What could Dynamic Districts look like in... **PARKS & OPEN SPACES**

CELEBRATE

CONNECT

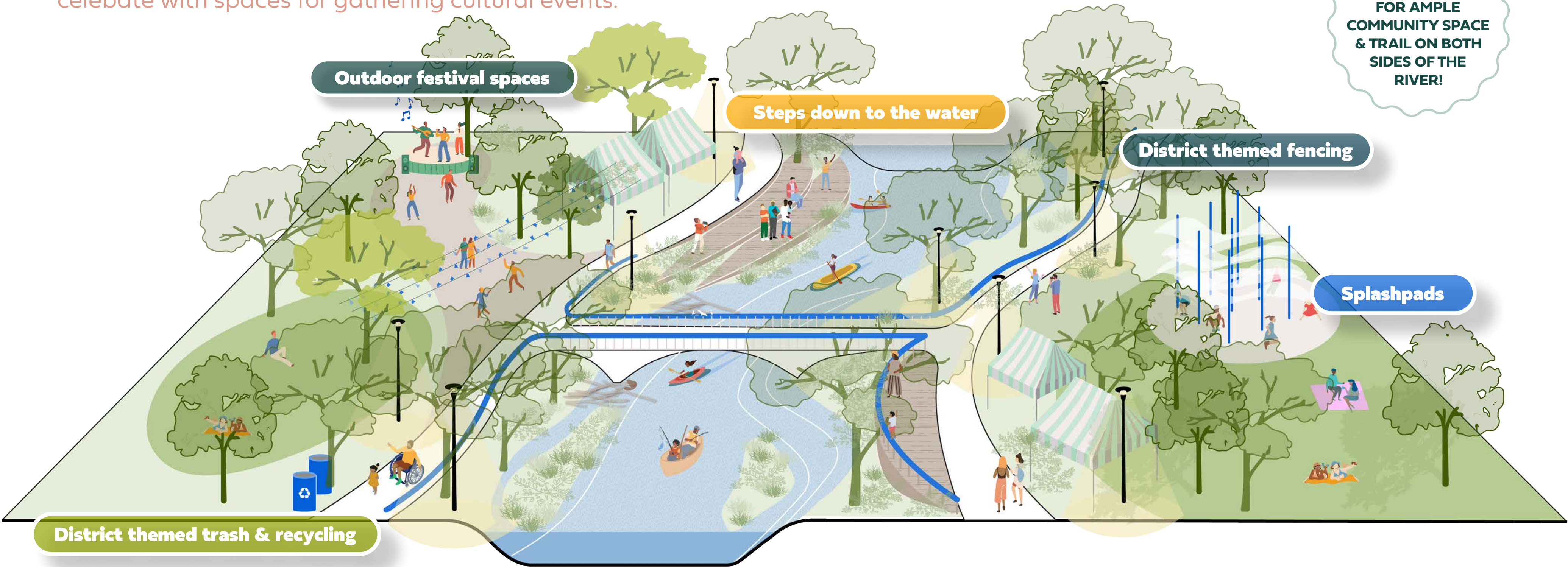
COLLECTIVE CARE

RESTORE & ENHANCE

SAFE & VIBRANT

Dynamic Districts celebrates the uniqueness of Westside neighborhoods and ecology, and parks are where the communities come together to gather and celebrate with spaces for gathering cultural events.

PARKS ALLOW FOR AMPLE COMMUNITY SPACE & TRAIL ON BOTH SIDES OF THE RIVER!



Outdoor festival spaces

Steps down to the water

District themed fencing

Splashpads

District themed trash & recycling

What could Dynamic Districts look like at... **TRAIL INTERSECTIONS**

CELEBRATE

CONNECT

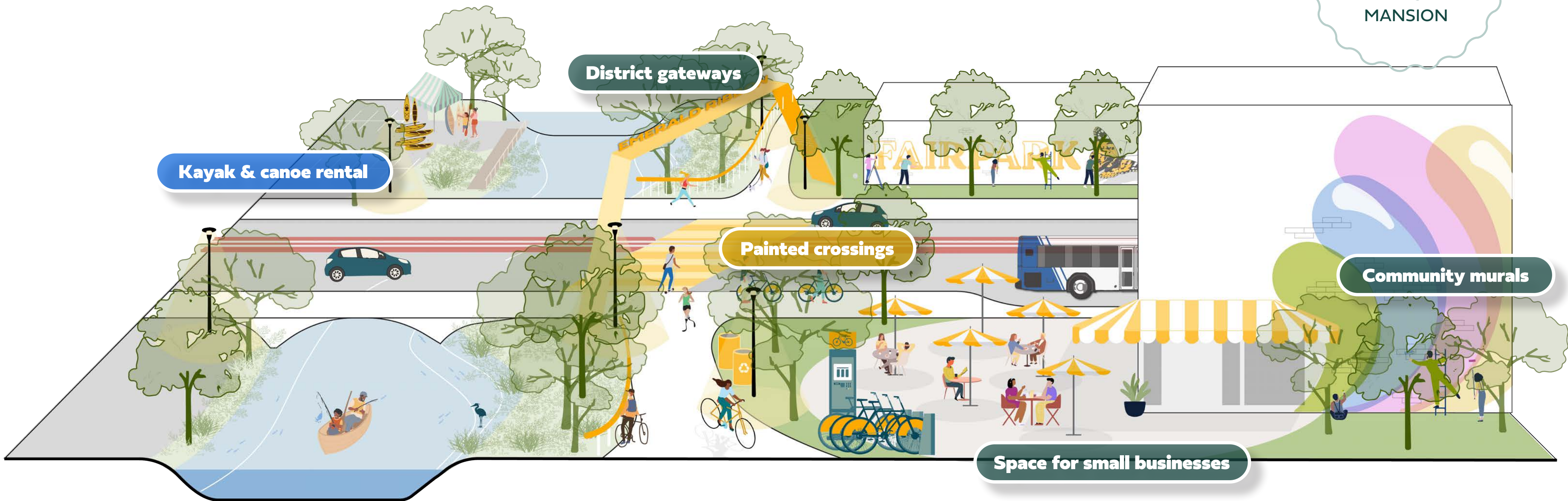
COLLECTIVE CARE

RESTORE & ENHANCE

SAFE & VIBRANT

The Emerald Ribbon is amplified at major intersections with gateway art that reflects the local community and makes connections to transit and local businesses.

**EXAMPLE INTERSECTIONS:
NORTH TEMPLE
AND FISHER
MANSION**



Kayak & canoe rental

District gateways

Painted crossings

Community murals

Space for small businesses

What could Dynamic Districts look like in... **RESIDENTIAL AREAS**

CELEBRATE

CONNECT

COLLECTIVE CARE

RESTORE & ENHANCE

SAFE & VIBRANT

With the Districts concept, the Emerald Ribbon becomes a communal backyard for residents to safely lounge, relax, recreate and garden alongside native species such as the Great Blue Heron or the American Beaver.

RESTORED RIVER HABITAT CREATES POLLINATOR SUPPORT FOR COMMUNITY GARDENS!



More water visibility

Local public art

Community gardens

Restored banks for easy river access

Increased lighting

3

River Ribbons

A passive, restored river at the core of an active, programmed edge with well-connected transition spaces

CULTURE

EXPERIENCE THE CORRIDOR FROM THE INSIDE OUT

- **Blue Ribbon:** Provides access to the river and water education
- **Green Ribbon:** A meandering nature trail with space to slow down
- **Yellow Ribbon:** A fast-paced commuter and bike corridor

NATURE

IMPROVE WATER QUALITY FROM THE OUTSIDE IN

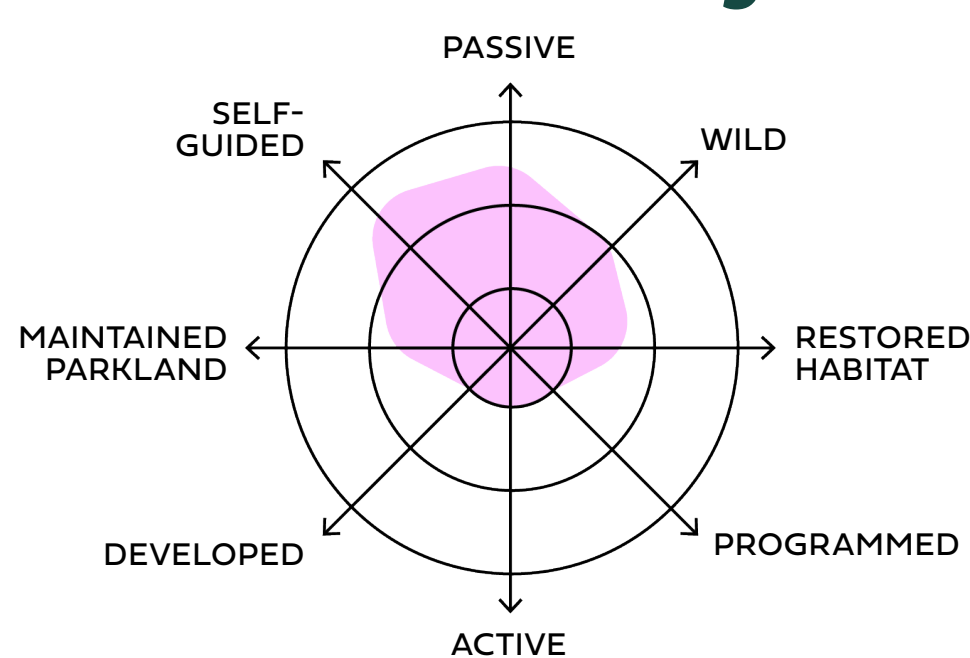
- **Blue Ribbon:** Focus on water quality and aquatic habitats
- **Green Ribbon:** Focus on land based habitat and invasive management
- **Yellow Ribbon:** Integrate nature-based solutions to clean runoff before it reaches the river

CARE

CREATING CONTINUOUS CARE TEAMS

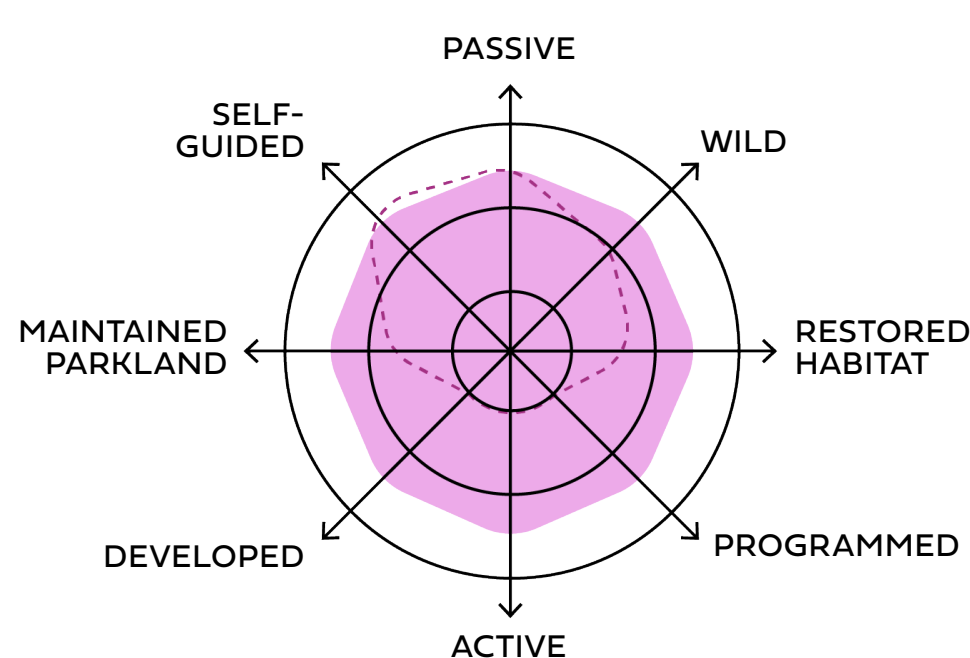
Each Ribbon will have a dedicated city maintenance team with partnerships to fill in the gaps.

How does this idea compare to the corridor today?



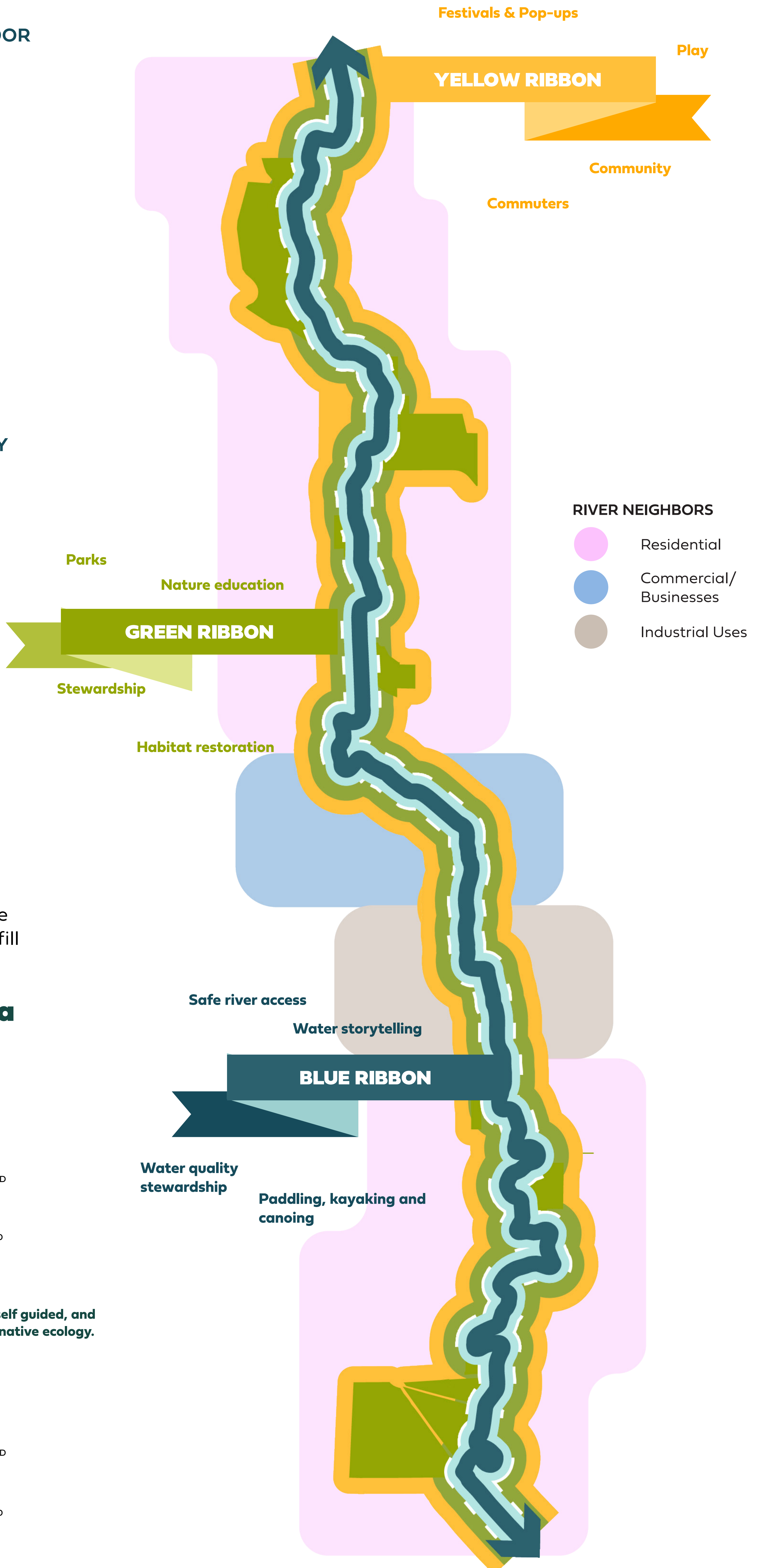
TODAY

The Jordan River Corridor is passive, self guided, and wild today, with minimal habitat and native ecology.



THIS CONCEPT

River Ribbons balances experiences and ecology by creating continuous habitat, programming, and trail amenities.



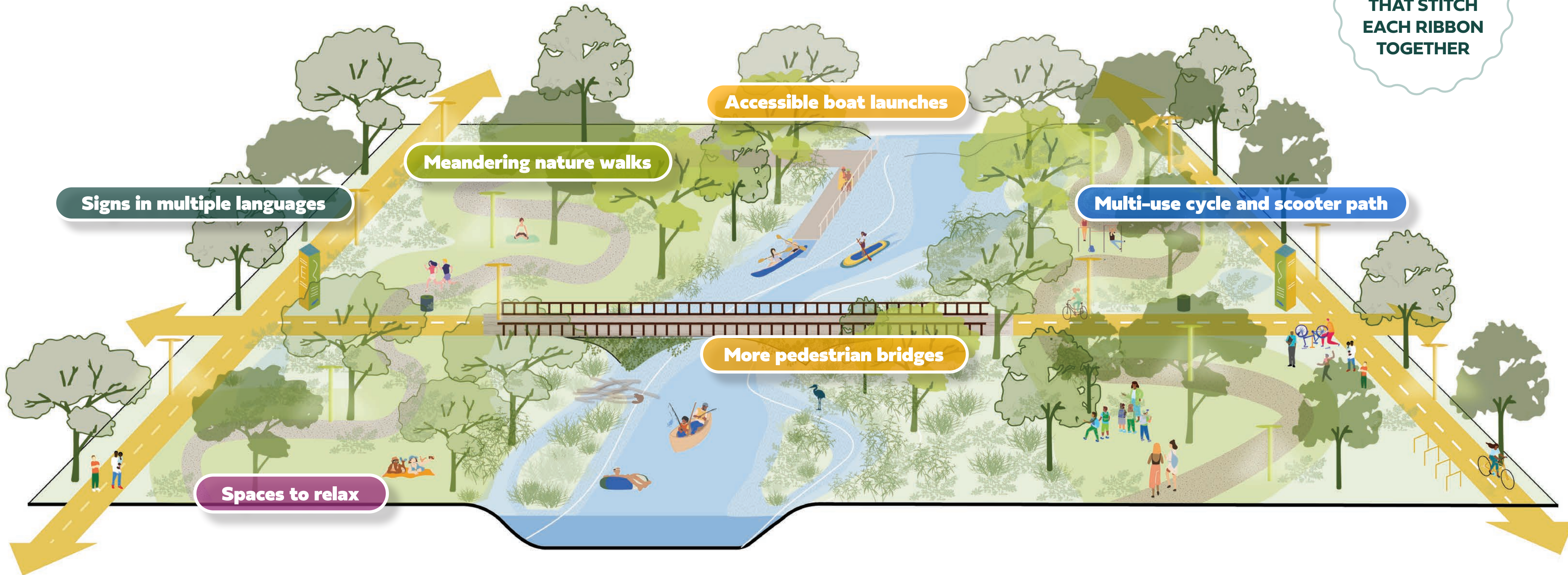
What could River Ribbons look like in...

PARKS & OPEN SPACES

The Green Ribbon takes center stage in parks as the corridor expands with room to relax in nature. The Blue Ribbon (the waterway) is used as a water trail, with access points prioritized in parks.



PARKS ARE THE PLACES THAT STITCH EACH RIBBON TOGETHER



Signs in multiple languages

Meandering nature walks

Accessible boat launches

Multi-use cycle and scooter path

More pedestrian bridges

Spaces to relax

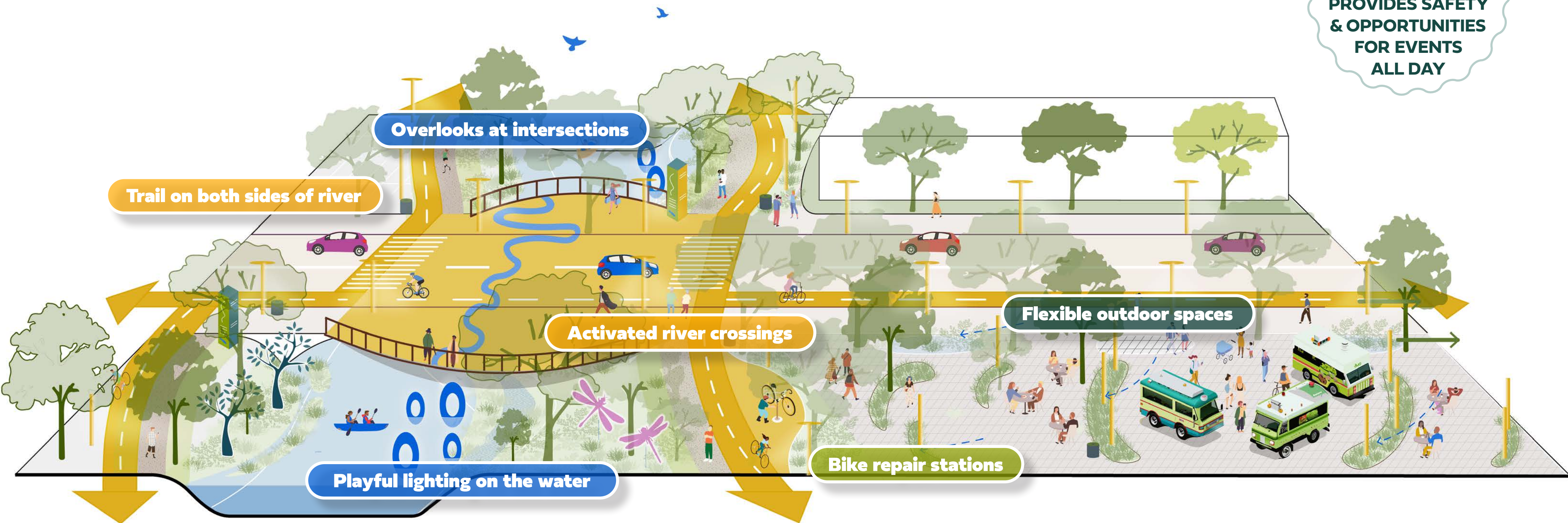
What could River Ribbons look like at...

TRAIL INTERSECTIONS

As the main transit corridor, the Yellow Ribbon is prioritized at major intersections to indicate trail crossings and provide safe lighting. The Blue Ribbon is highlighted to bring awareness to those passing by that they are crossing over the Jordan River.



A 24 HOUR CORRIDOR: ARTFUL LIGHTING PROVIDES SAFETY & OPPORTUNITIES FOR EVENTS ALL DAY



Overlooks at intersections

Trail on both sides of river

Activated river crossings

Playful lighting on the water

Bike repair stations

Flexible outdoor spaces

What could River Ribbons look like in... **RESIDENTIAL AREAS**

CELEBRATE

CONNECT

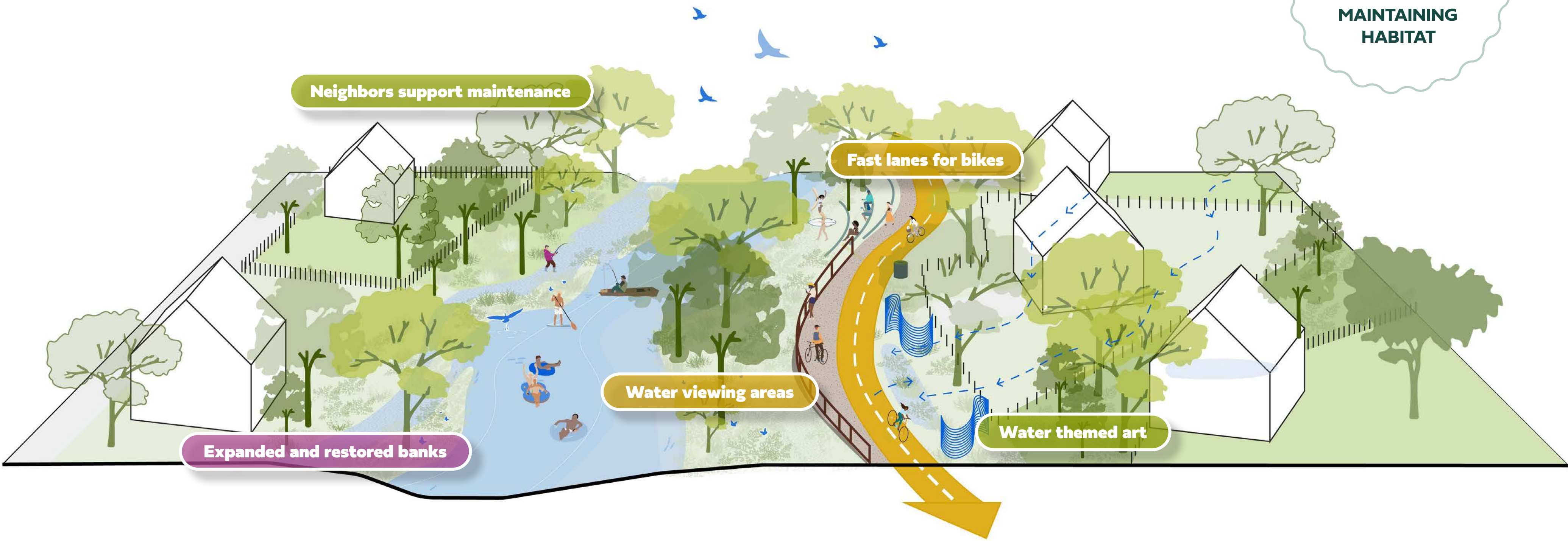
COLLECTIVE CARE

RESTORE & ENHANCE

SAFE & VIBRANT

The trail is widened in residential areas to create a fast-moving lane for commuters along the Yellow Ribbon and a more pedestrian friendly Green Ribbon with passive overlooks.

**A WIDENED TRAIL CORRIDOR
A RANGE OF USER GROUPS WHILE
MAINTAINING HABITAT**



Neighbors support maintenance

Fast lanes for bikes

Water viewing areas

Water themed art

Expanded and restored banks